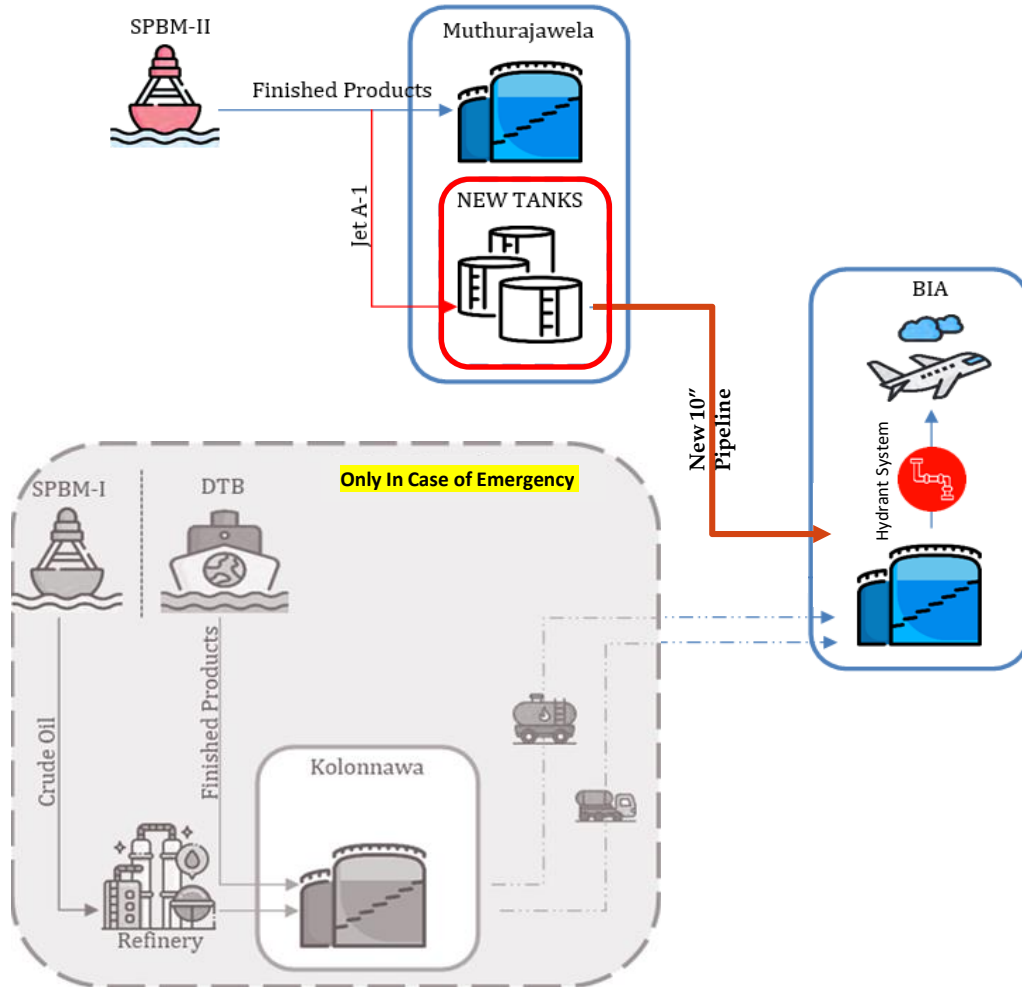




**CONSTRUCTION OF A JET A-1 TRANSFER PIPELINE FROM  
MUTHURAJAWELA TO BIA KATUNAYAKE AND CONSTRUCTION  
OF JET A-1 STORAGE TANKS AND ASSOCIATED FACILITIES  
WITH MODIFICATIONS TO THE EXISTING TERMINAL FACILITY  
AT MUTHURAJAWELA**

***30th September 2025***

# Planned Jet A-1 Supply Models for BIA Katunayake



# Key Components of the Development

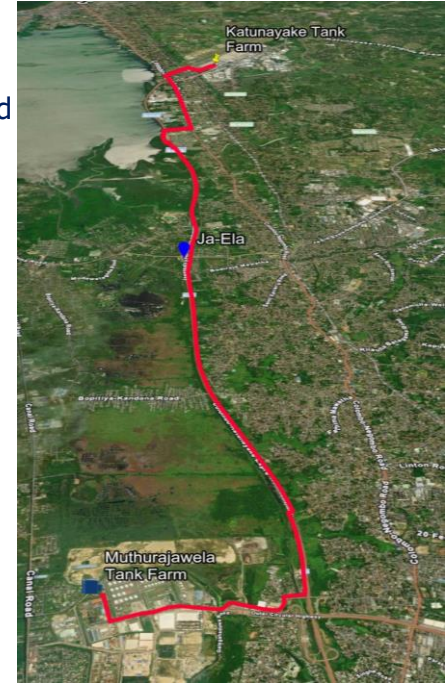
## New Tank Farm at Muthurajawela

- Receiving Tanks (2 X 30,000 m<sup>3</sup>)
- Transfer Tanks (2 X 15,000 m<sup>3</sup>)
- Product Downgrade Tank (1 X 2000 m<sup>3</sup>)
- Pump House with other associated facilities
- Administration Area



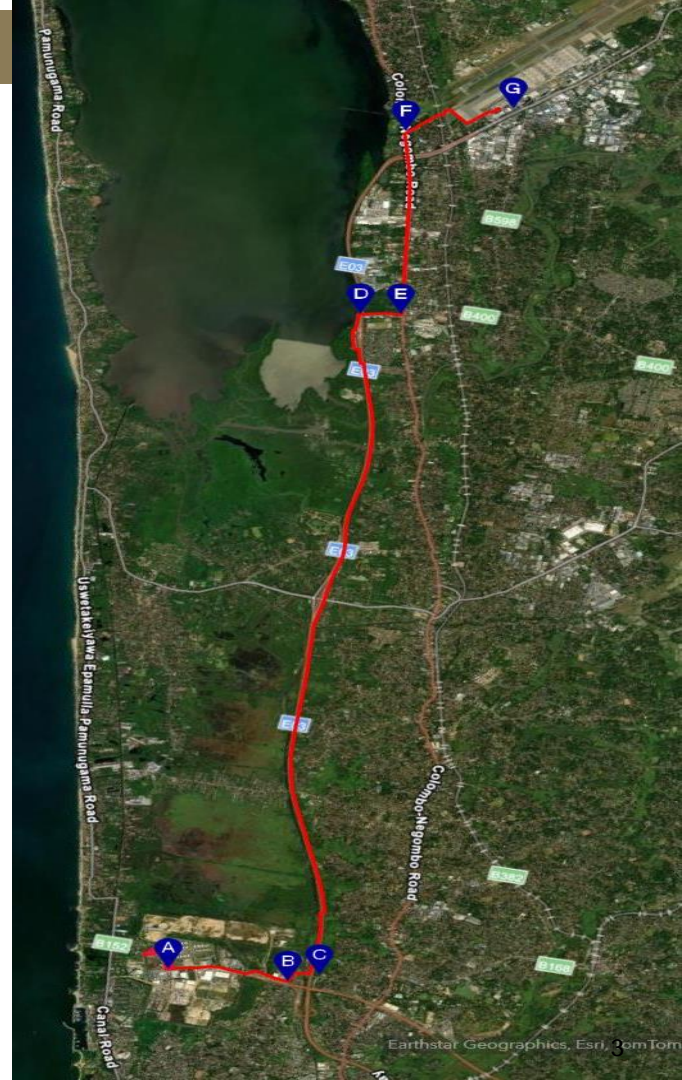
## New Pipeline from Muthurajawela to BIA

- 21km length 10" diameter Jet A-1 dedicated Transfer Pipeline with following systems
  1. Intelligent Pigging Inspection
  2. Automatic leak detection system
  3. Cathodic Protection
  4. Sectional Isolation Valves
  5. Surge Protection System
  6. Flow Measurement
  7. Filtration System



# Pipeline Route

Route Section	Name
A	Muthurajawela Tank Farm
AB	Kerawalapitiya Road
BC	Gunasekara Mawatha
CD	Colombo – Katunayake Expressway (CKE)
DE	Lalantha Gunasekara Mawatha (Abans Road)
EF	A3 Road
FG	BIA premises
G	Aviation Refueling Terminal, BIA

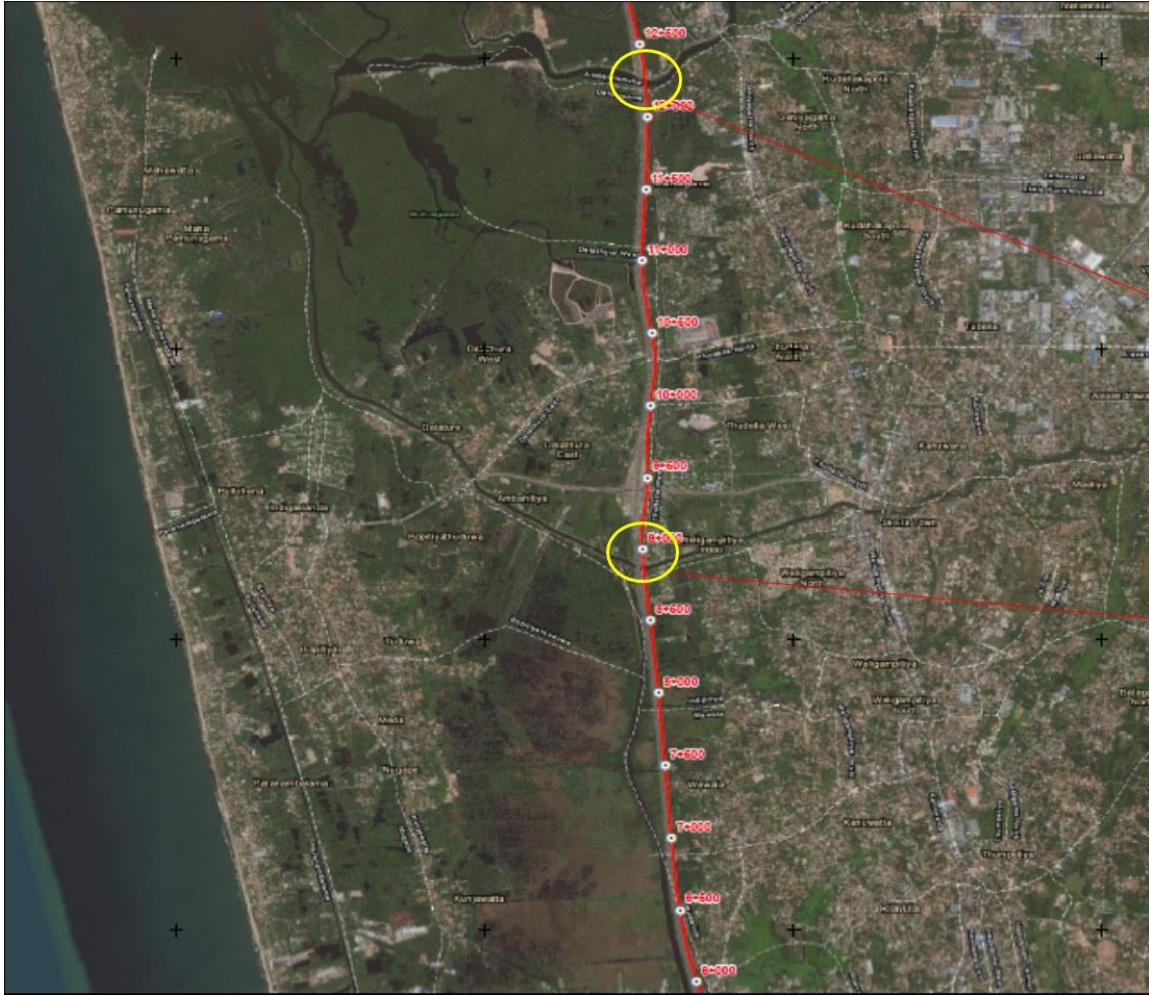




# Pipeline Route

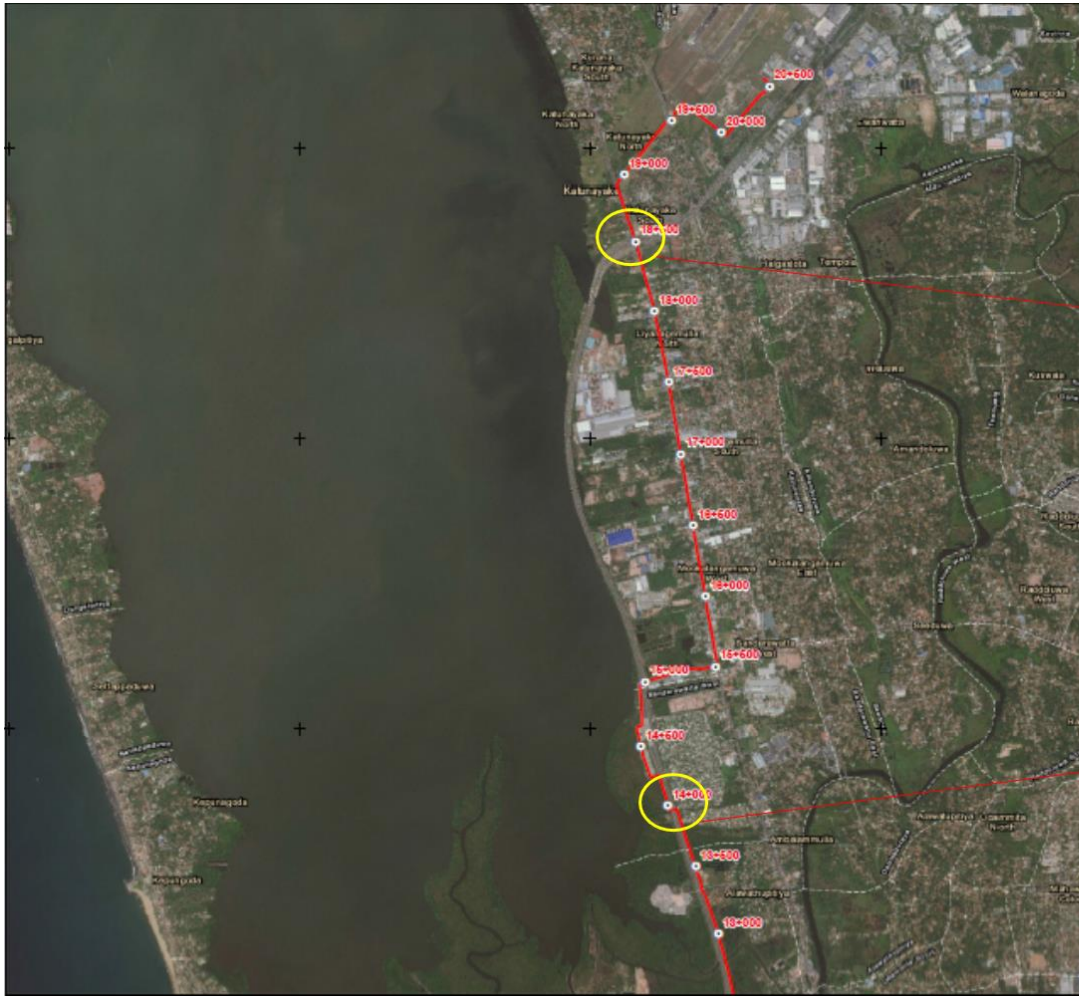


# Pipeline Route

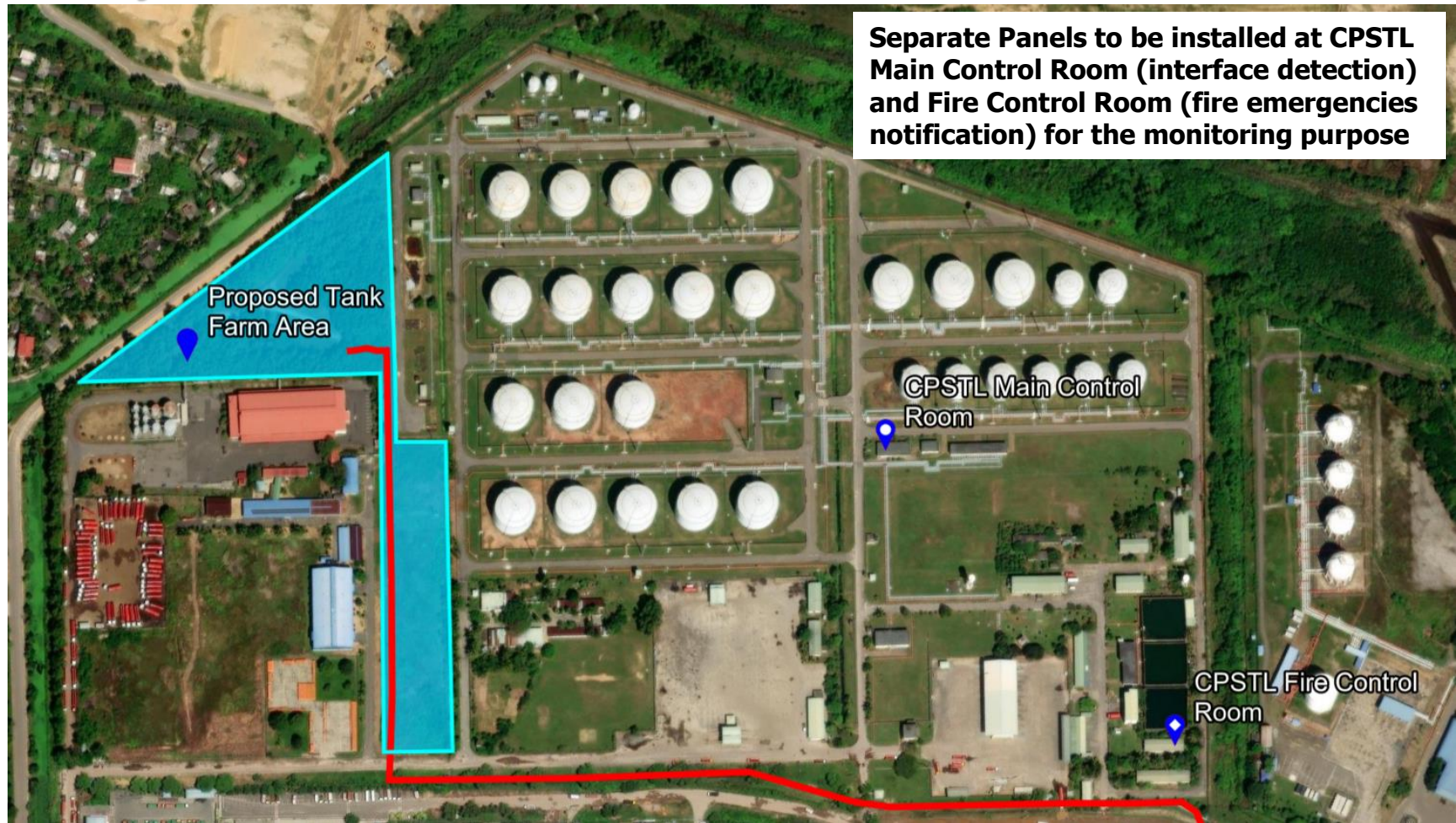




# Pipeline Route Sections



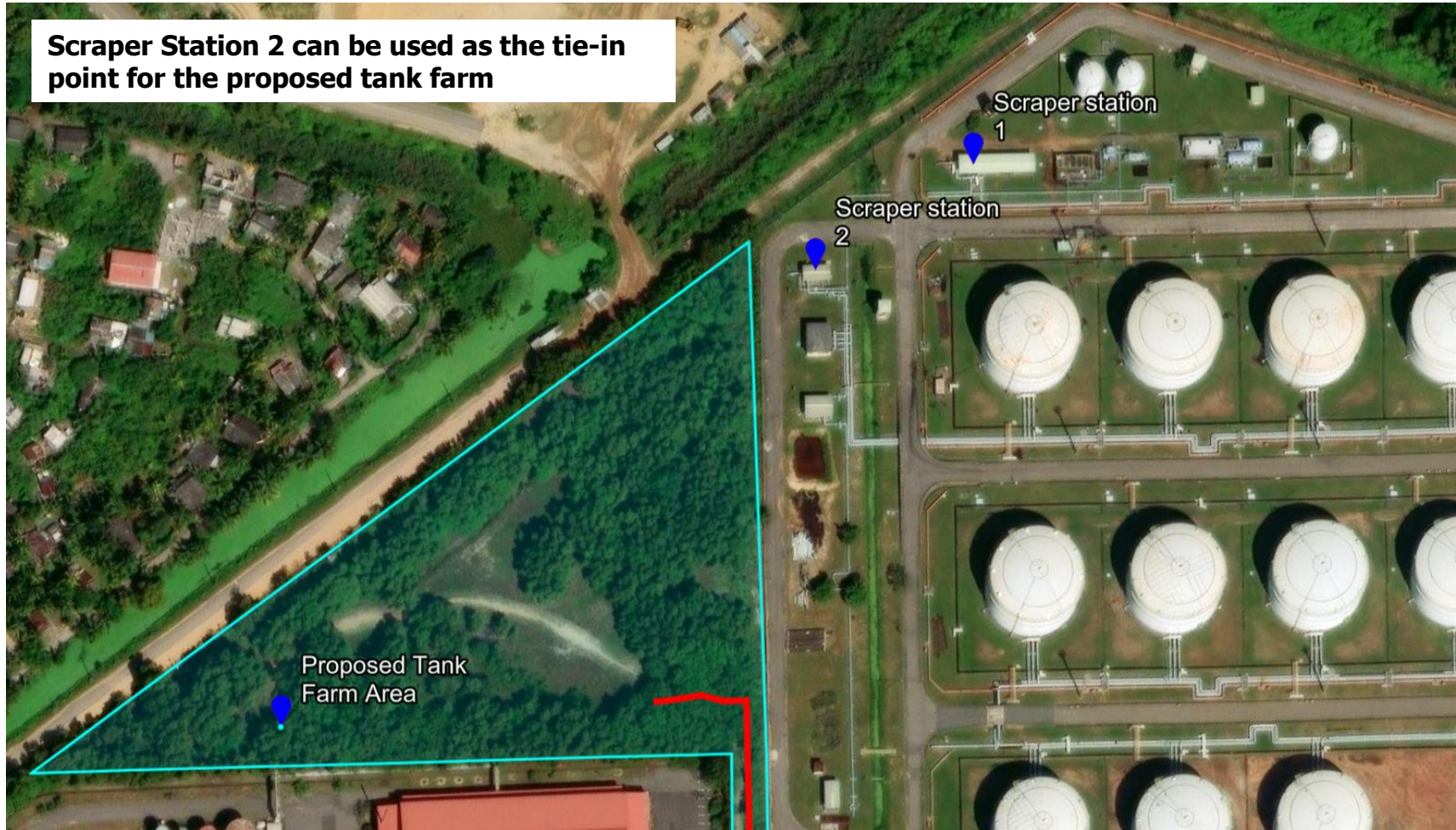
# Muthurajawela Terminal





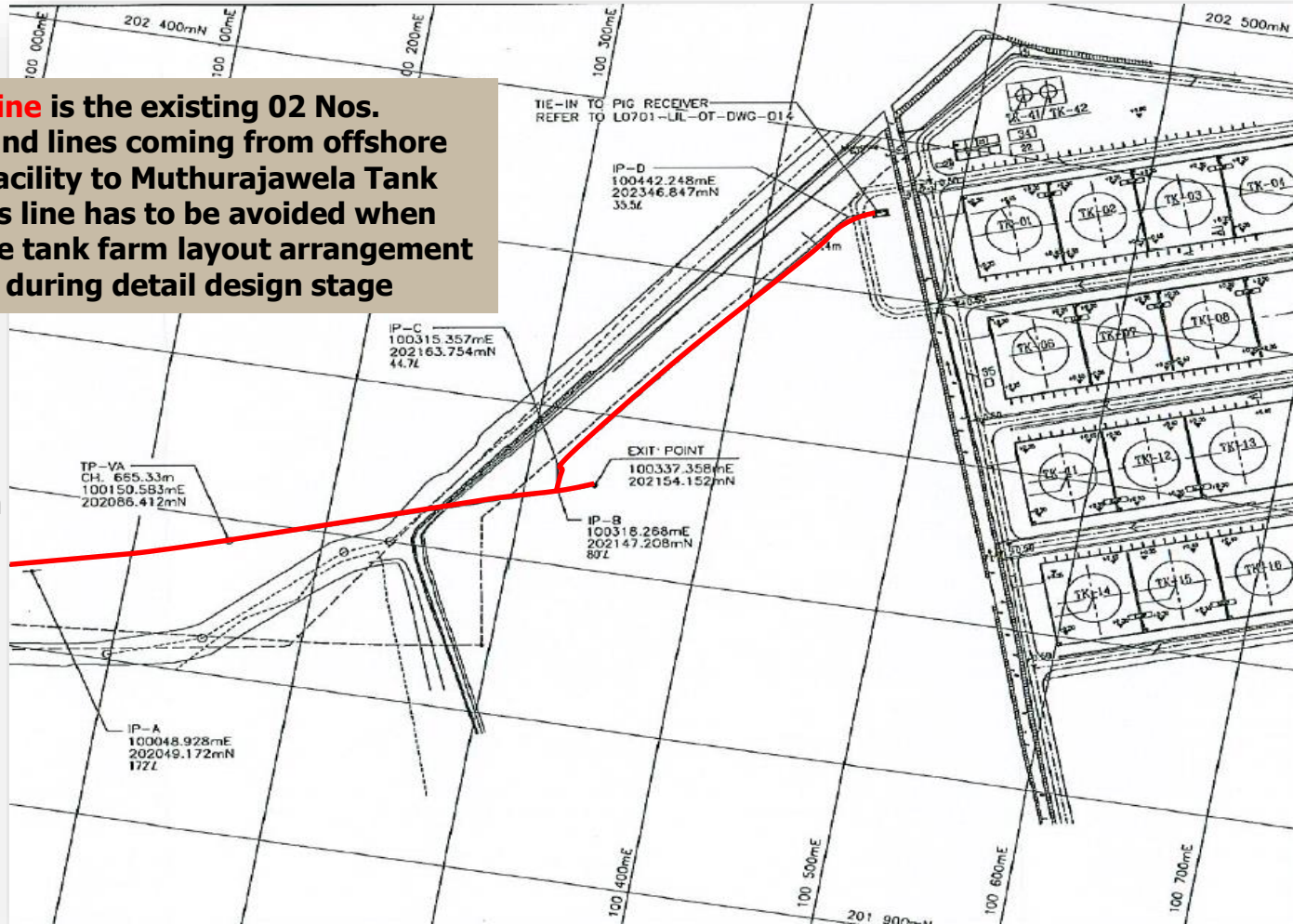
# Muthurajawela Terminal

**Scraper Station 2 can be used as the tie-in point for the proposed tank farm**



# Muthurajawela Terminal

**Red Line** is the existing 02 Nos. underground lines coming from offshore SPBM-2 facility to Muthurajawela Tank Farm. This line has to be avoided when finalizing the tank farm layout arrangement design during detail design stage



Pipeline from  
SPBM 2  
facility in  
offshore



## **Material Transport Along Expressway:**

- The Road Development Authority (RDA) has agreed to permit the use of the Expressway for transporting construction materials during off-peak hours, for a limited period during the daytime.
- Highway traffic control will be handled by the RDA, and the Contractor shall pay the administration expenses to the RDA in this regard (Covered under Provisional Sum Item in Price Schedule).





# Special Updates

## Expressway crossing through 21/3 Box Culvert:

- RDA has agreed to lay the pipeline along the route indicated in yellow and to locate BVS-3 at the beginning of Lalantha Gunasekara Mawatha.
- This arrangement will **eliminate** the need for a second CKE crossing through the 21/3 Box Culvert, allowing the pipeline to be laid along a straight route



## Land Clearing of Tank Farm Area:

- It has been decided that CPC will undertake the land clearing of Tank Farm Area (Blue colour marked area) of Muthurajawela CPC Land by removing the existing vegetation prior to awarding the contract .
- This arrangement will expedite the mobilization and execution of the contract.



## Access Gate to Tank Farm Area:

- Access Gate from CPSTL existing Tank farm to new Tank farm area shall be created in order to facilitate Fire fighting Vehicles to move inside the new tank farm in case of emergencies.







**THANK YOU**